

Histogram Start Time 10:58:29 April 20, 2009
 Histogram Finish Time 08:16:31 April 24, 2009
 Number of Intervals 1120 at 5 minutes
 Range Geo :254 mm/s
 Sample Rate 1024sps
 Job Number: 1

Serial Number BE12708 V 8.12-8.0 MiniMate Plus
 Battery Level 6.8 Volts
 Calibration October 1, 2008 by Instanter Inc.
 File Name N708COK1.5HO

Notes

Location:

Client:

User Name:

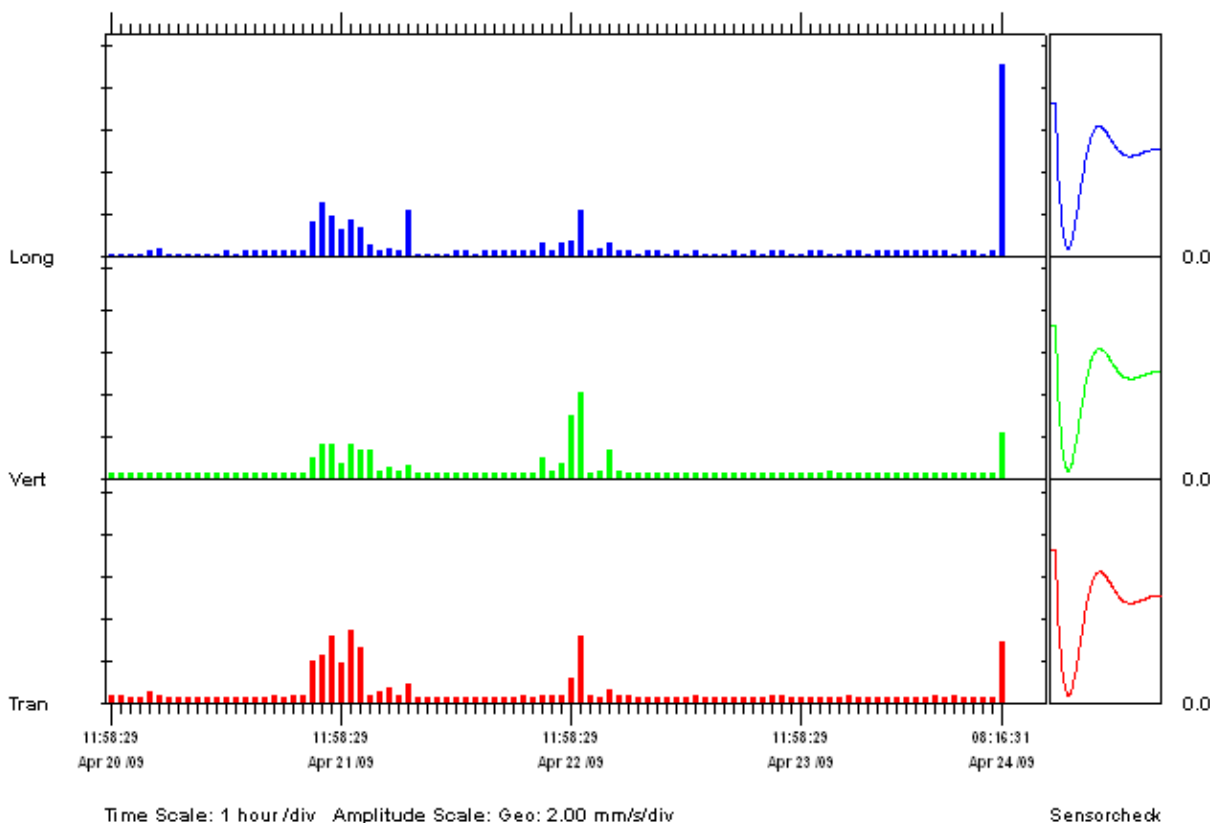
General:

Extended Notes

Post Event Notes

	Tran	Vert	Long	
PPV	3.43	4.06	9.14	mm/s
ZC Freq	85	>100	64	Hz
Date	Apr 21 /09	Apr 22 /09	Apr 24 /09	
Time	12:28:29	12:43:29	08:16:31	
Sensorcheck	Passed	Passed	Passed	
Frequency	7.3	7.3	7.4	Hz
Overswing Ratio	3.9	4.1	4.1	

Peak Vector Sum 9.20 mm/s on April 24, 2009 at 08:16:31



Date/Time Long at 08:16:29 April 24, 2009
 Trigger Source Geo: 5.00 mm/s
 Range Geo :254 mm/s
 Record Time 2.0 sec at 1024 sps
 Job Number: 1

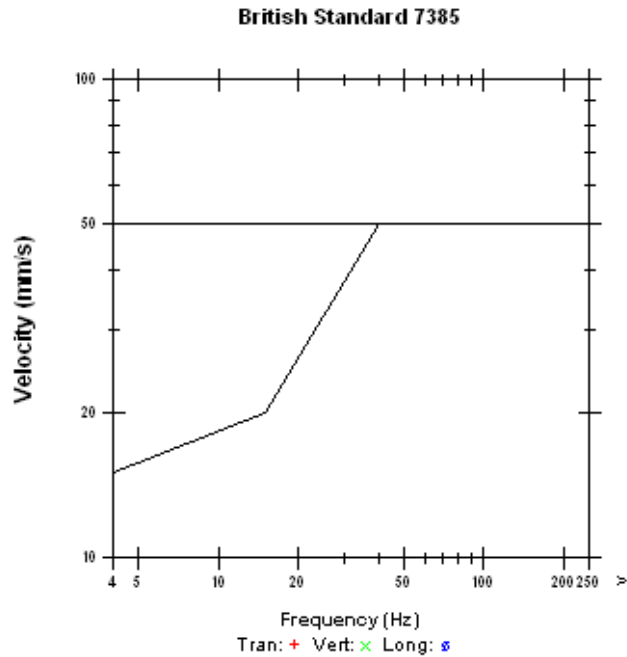
Serial Number BE12708 V 8.12-8.0 MiniMate Plus
 Battery Level 6.8 Volts
 Calibration October 1, 2008 by Instanter Inc.
 File Name N708COR8.BH0

Notes
 Location:
 Client:
 User Name:
 General:

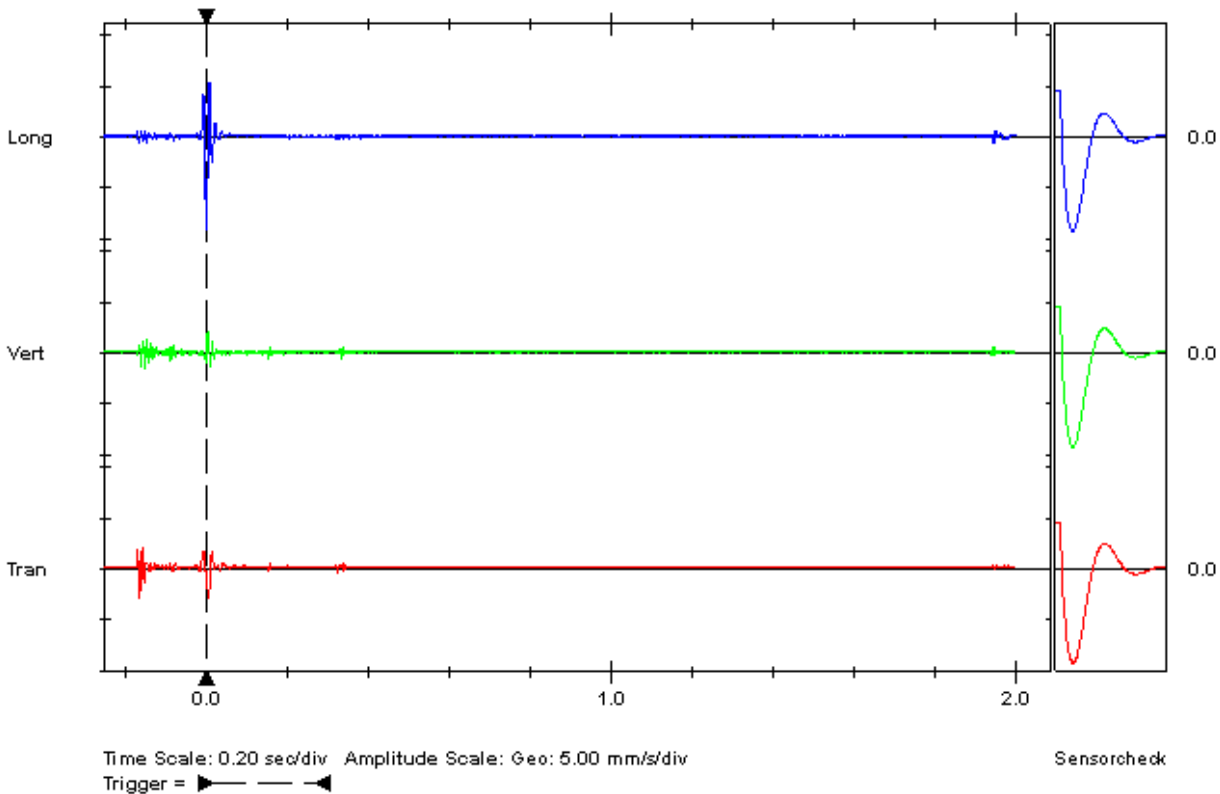
Extended Notes
 Combo Mode April 20, 2009 10:58:28

Post Event Notes

	Tran	Vert	Long	
PPV	2.92	2.16	9.14	mm/s
ZC Freq	>100	73	64	Hz
Time (Rel. to Trig)	-0.162	0.005	0.002	sec
Peak Acceleration	0.186	0.133	0.371	g
Peak Displacement	0.00974	0.00403	0.0226	mm
Sensorcheck	Passed	Passed	Passed	
Frequency	7.3	7.3	7.4	Hz
Overswing Ratio	3.9	4.1	4.1	



Peak Vector Sum 9.20 mm/s at 0.002 sec



Histogram Start Time 08:21:46 April 24, 2009
 Histogram Finish Time 12:20:58 April 24, 2009
 Number of Intervals 48 at 5 minutes
 Range Geo :254 mm/s
 Sample Rate 1024sps
 Job Number: 1

Serial Number BE12708 V 8.12-8.0 MiniMate Plus
 Battery Level 6.8 Volts
 Calibration October 1, 2008 by InstanTel Inc.
 File Name N708COR8.KA0

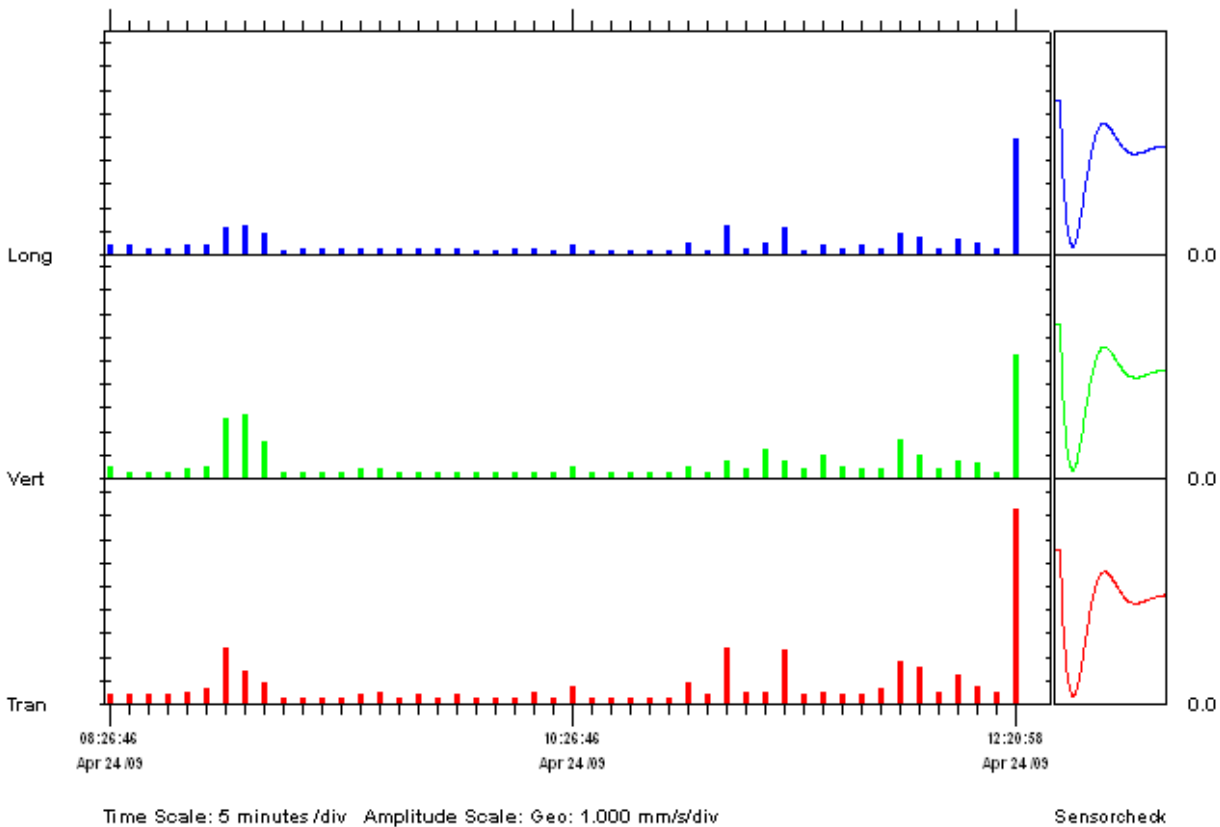
Notes
 Location:
 Client:
 User Name:
 General:

Extended Notes

Post Event Notes

	Tran	Vert	Long	
PPV	8.25	5.21	4.95	mm/s
ZC Freq	57	64	85	Hz
Date	Apr 24 /09	Apr 24 /09	Apr 24 /09	
Time	12:20:58	12:20:58	12:20:58	
Sensorcheck	Passed	Passed	Passed	
Frequency	7.3	7.3	7.4	Hz
Overswing Ratio	3.9	4.0	4.1	

Peak Vector Sum 9.89 mm/s on April 24, 2009 at 12:20:58



Date/Time Tran at 12:20:56 April 24, 2009
 Trigger Source Geo: 5.00 mm/s
 Range Geo :254 mm/s
 Record Time 2.0 sec at 1024 sps
 Job Number: 1

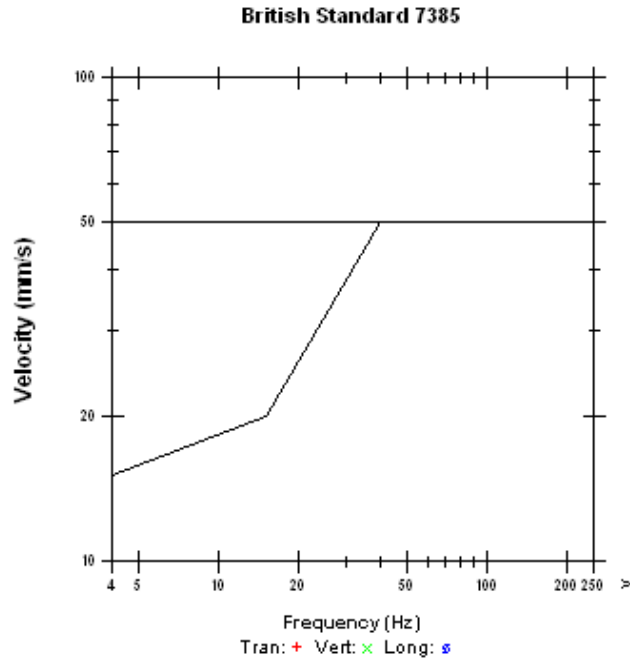
Serial Number BE12708 V 8.12-8.0 MiniMate Plus
 Battery Level 6.8 Volts
 Calibration October 1, 2008 by Instanter Inc.
 File Name N708CORJ.MWO

Notes
 Location:
 Client:
 User Name:
 General:

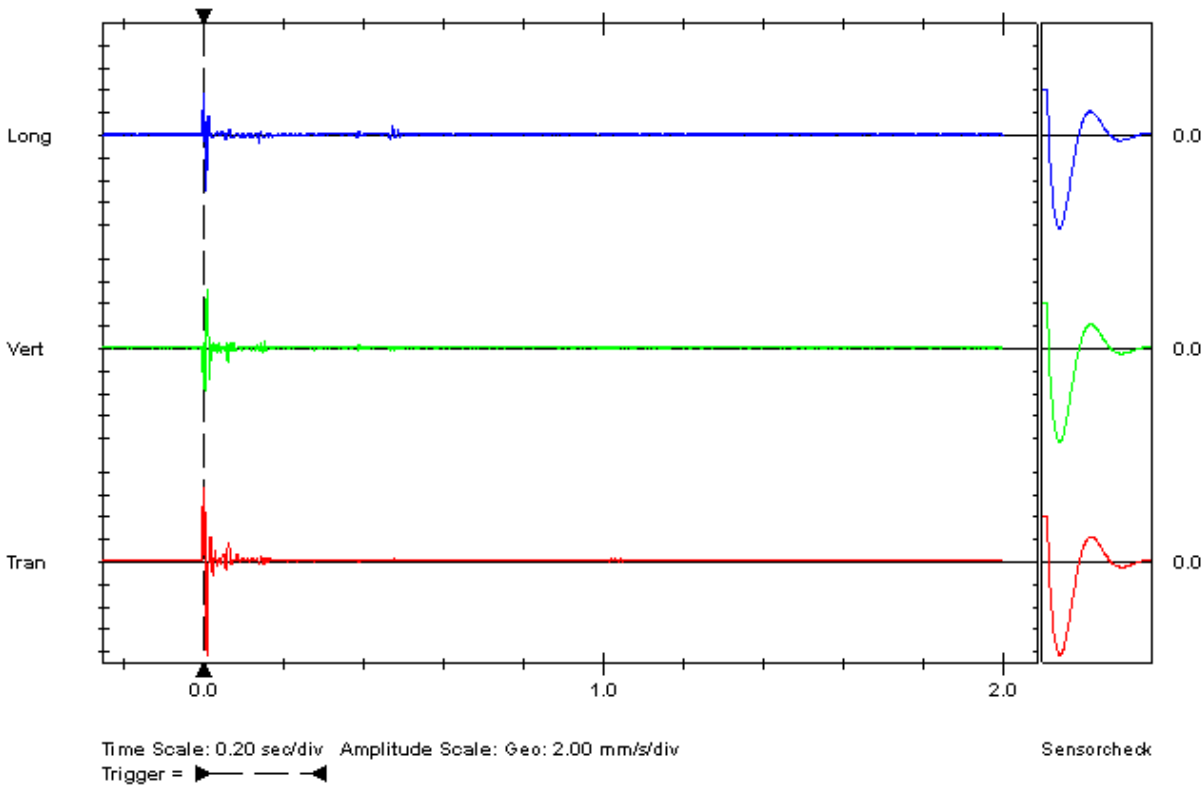
Extended Notes
 Combo Mode April 24, 2009 08:21:46

Post Event Notes

	Tran	Vert	Long	
PPV	8.25	5.21	4.95	mm/s
ZC Freq	57	64	85	Hz
Time (Rel. to Trig)	0.010	0.011	0.008	sec
Peak Acceleration	0.451	0.345	0.318	g
Peak Displacement	0.0189	0.0138	0.00850	mm
Sensorcheck	Passed	Passed	Passed	
Frequency	7.3	7.3	7.4	Hz
Overswing Ratio	3.9	4.0	4.1	



Peak Vector Sum 9.89 mm/s at 0.010 sec



Histogram Start Time 12:26:14 April 24, 2009
 Histogram Finish Time 21:42:28 April 26, 2009
 Number of Intervals 687 at 5 minutes
 Range Geo :254 mm/s
 Sample Rate 1024sps
 Job Number: 1

Serial Number BE12708 V 8.12-8.0 MiniMate Plus
 Battery Level 6.8 Volts
 Calibration October 1, 2008 by InstanTel Inc.
 File Name N708CORJ.VQO

Notes
 Location:
 Client:
 User Name:
 General:

Extended Notes

Post Event Notes

	Tran	Vert	Long	
PPV	0.889	1.40	1.02	mm/s
ZC Freq	73	>100	73	Hz
Date	Apr 24 /09	Apr 24 /09	Apr 24 /09	
Time	13:56:14	13:56:14	13:56:14	
Sensorcheck	Passed	Passed	Passed	
Frequency	7.3	7.3	7.4	Hz
Overswing Ratio	3.9	4.1	4.1	

Peak Vector Sum 1.89 mm/s on April 24, 2009 at 13:56:14

